

mdf italia



© COPYRIGHT 2024 MDF ITALIA SRL SOCIETA' UNIPERSONALE

1997-2004

ALUMINIUM BED

Designed by Bruno Fattorini

The rigor of forms got through the lens of simplicity, accompanied by a great expressive strength: Bruno Fattorini's Aluminium Bed means all that.

A bed made of aluminium, a lightweight and flexible material that gives a contemporary touch to this furnishing solution, which also comes in the romantic version with canopy, as well as 65 cm high headboard. The lacquered model is very cool, in glossy or matt painted aluminium, in the following colours: black, white and red, fit for modern and evolving night areas.

ALUMINIUM BED IN SHORT

- Lightweight and contemporary touch
- Offered in different colours and stylistic variants
- A design featuring simplicity and energy.

STRUCTURE

Structure in natural anodized aluminium or glossy or matt painted in white, black or red colours.

SLAT BASES

Load-bearing orthopedic platform in tubular steel with 40x30mm section, powder-coated finish.

Fixed structure, with slats in laminated beech thickness 8 mm, width 70 mm and fitted with regulating cursors.

Moving the cursors along the length of the slats allows to adjust rigidity in the lower back area and adapt the bed to needs of the person and the shape of the body.

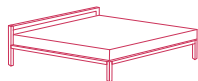
Upon request, single slats for double beds.

DIMENSIONS

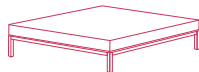
Widths range from one metre to 210 cm, with a fixed length: 210 cm. Maximum available length 220 cm (slats usable length 210 cm). Unmodifiable heights of headboards: 30 or 65 cm. Special sizes for slats and frame are available, in multiples of 10 cm, except for canopy versions.

Overall sizes shown are nominal; the real dimensions are - 1.5cm in both length and width.

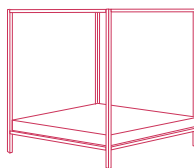
ALUMINIUM BED
aluminium/lacquered



H65*
L100 D210 cm
L150 D210 cm
L160 D210 cm
L170 D210 cm
L180 D210 cm
L190 D210 cm
L210 D210 cm
(headboard H65 cm)



H30 sommier*
L100 D210 cm
L150 D210 cm
L160 D210 cm
L170 D210 cm
L180 D210 cm
L190 D210 cm
L210 D210 cm
(frame H30 cm)



H210 canopy sommier*
L100 D210 cm
L150 D210 cm
L160 D210 cm
L170 D210 cm
L180 D210 cm
L190 D210 cm
L210 D210 cm
(canopy H210 cm)

***slat sizes**
L90 D200 cm
L140 D200 cm
L150 D200 cm
L160 D200 cm
L170 D200 cm
L180 D200 cm
L200 D200 cm

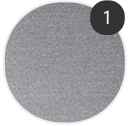
Finishing

The number in the dot corresponds to the number of colour/material finish.

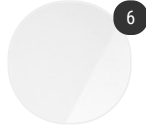
Here below, in the section FINISH OPTIONS, please note all the colours of the materials used for this product.

BED

Structure



Aluminium



Painted
aluminium

Finish options

STRUCTURE

Aluminium

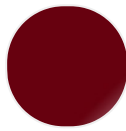


Natural
anodized
aluminium
X073

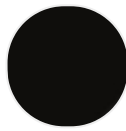
Painted aluminium



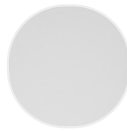
gloss painted
white X060



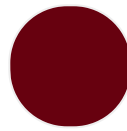
gloss painted
red X065



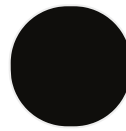
gloss painted
black X061



matt painted
white X053



matt painted
red



matt painted
black